



TELEDYNE
BATTERY PRODUCTS
A Teledyne Technologies Company

INSTALLATION PROCEDURE FOR 7000
SERIES BATTERIES

Document No.	TD14-7-01
Revision	NC
Date	8/25/10
Page	1 of 3

**INSTALLATION PROCEDURE FOR
7000 SERIES BATTERIES**

Prepared by

J. M. Rajpara

Date:

8/25/10

**TELEDYNE BATTERY PRODUCTS
840 WEST BROCKTON AVENUE
REDLANDS, CA 92374**

A. INSTALLATION PROCEDURE FOR 7600 BATTERY

This installation procedure is for a typical 7600 battery installation. For detail Instructions see the Aircraft Maintenance Manual or STC

1. Ensure that the battery and external power switches, in the cockpit, are in the off position.
2. Open battery compartment access panels.
3. Position the battery in the battery tray and secure with hold down bolts. Tighten wing nuts to a torque of 10 in. lbs. See Figure 1 for Battery Installation drawing.
4. Connect vent tubes and tighten clamps (if required).

NOTE: If battery is installed in a ventilated battery compartment the vent tubes are not required.

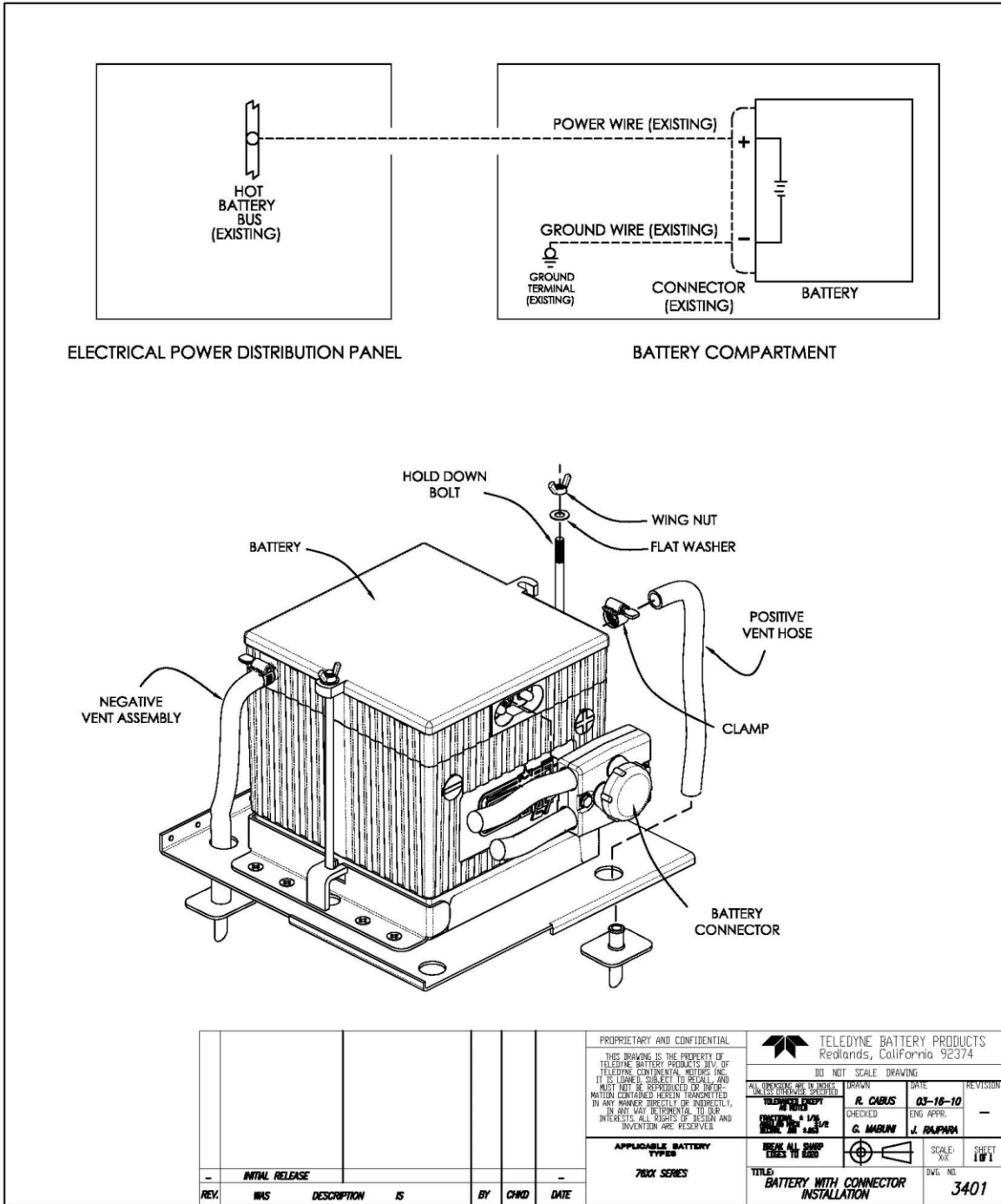
5. Connect battery connector to battery. Check that the positive and negative cable from the aircraft, are connected to the correct polarity on the aircraft connector before connecting to the battery.
6. Secure the battery compartment.

NOTE:

For Instructions for Continued Airworthiness of the battery see TELEDYNE BATTERY PRODUCTS' ICA AND COMPONENT MAINTENANCE MAUNUAL FOR TSO-C173 APPROVED GILL 7000 SERIES LT VRLA AIRCRAFT BATTERIES, DOCUMENT NO. TD14-8-01. This document is available on TELEDYNE BATTERY PRODUCTS website: www.gillbattery.com

TELEDYNE BATTERY PRODUCTS 840 West Brockton Avenue, Redlands, CA 92374	Document Number	Page	Rev
	TD14-7-01	2 of 3	NC

Figure 1: BATTERY INSTALLATION



PROPRIETARY AND CONFIDENTIAL THIS DRAWING IS THE PROPERTY OF TELEDYNE BATTERY PRODUCTS INC. OF TELEDYNE CONTINENTAL AUTOS INC. IT IS LOANED SUBJECT TO RECALL AND MUST NOT BE REPRODUCED OR INTER- MATION CONTAINED HEREIN TRANSMITTED IN ANY MANNER DIRECTLY OR INDIRECTLY, IN ANY WAY DETRIMENTAL TO OUR INTERESTS. ALL RIGHTS OF DESIGN AND INVENTION ARE RESERVED.					TELEDYNE BATTERY PRODUCTS Redlands, California 92374	
					DO NOT SCALE DRAWING	
ALL DIMENSIONS ARE IN INCHES UNLESS OTHERWISE SPECIFIED		DRAWN R. CABUS	DATE 03-16-10	REVISION		
TELETYPE UNIT AS SHOWN		CHECKED G. MARLIN	ENG APPR. J. RAJAPPA		-	
CHECKING & LOGS DATE: 03-16-10		BREAK ALL SHARP EDGES TO R20		SCALE: XX	SHEET 1 OF 1	
APPLICABLE BATTERY TYPES 700X SERIES		TITLE BATTERY WITH CONNECTOR INSTALLATION		DWG. NO. 3401		

TELEDYNE BATTERY PRODUCTS 840 West Brockton Avenue, Redlands, CA 92374	Document Number	Page	Rev
	TD14-7-01	3 of 3	NC